

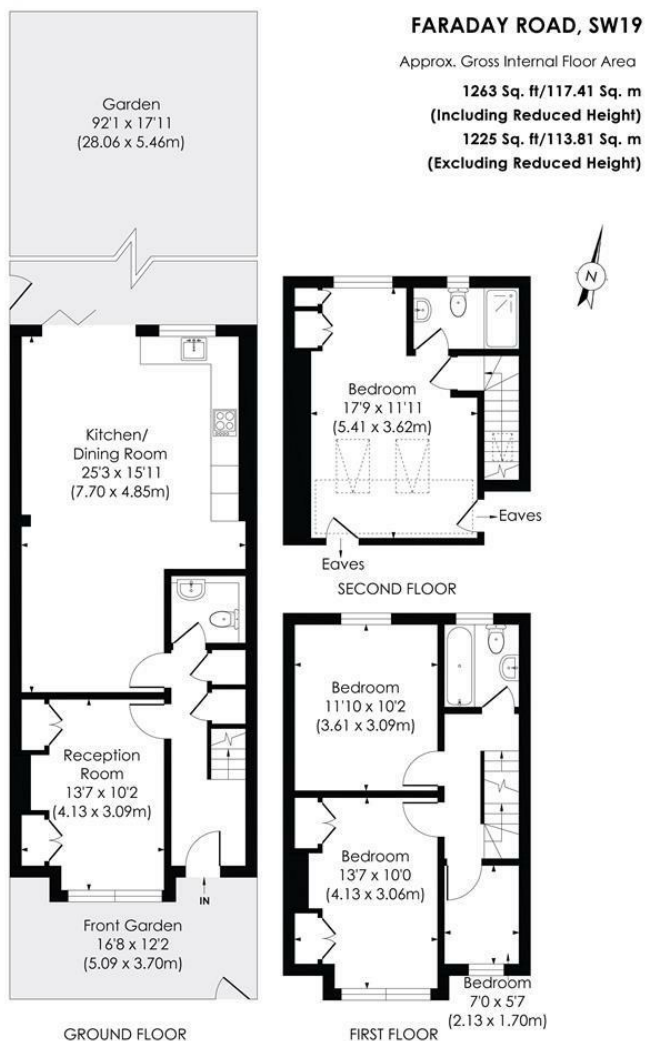
Faraday Road Wimbledon, SW19 8PB

£1,150,000 Freehold



Superbly located in the heart of the desirable 'South Park Gardens' Grid in Wimbledon is this four bedroom End of Terrace extended period family home, offered to the market with no onward chain and boasting a rarely available 90 ft private garden. In excess of 1250 sq ft, comprising a spacious open-plan kitchen/diner extension and a separate front reception and W/C on the ground floor, with two well-appointed double bedrooms, a third 'single' bedroom and family bathroom on the first floor. The loft has been converted to add a fourth 'principal bedroom' with en-suite.

Positioned in the sought after South Park Gardens, close to the Outstanding Holy Trinity School and walking distance to Wimbledon Town Centre and a myriad of transport links including Mainline Train, Northern Line Tube and the Thameslink, this is a magnificent family home.

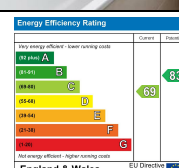
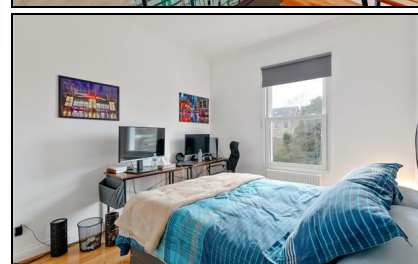


pixangle
PROPERTY MARKETING

This floor plan has been prepared for the purpose of illustration only in accordance with the latest RICS code of measuring practice and is not to scale. All measurements and areas are approximate and whilst every effort has been made to ensure the accuracy of the plan contained here, no responsibility is taken for any error, omission or misstatement.

© Pixangle Property Marketing Ltd. info@pixangle.com Tel: 0208 870 2118

- End of Terrace Victorian Family Home
- Four Bedrooms
- Two Bathrooms + W/C
- Superb 90 ft Private Garden
- Desirable South Park Gardens Location
- Close to Outstanding Schools and Multiple Transport Links
- No Onward Chain
- Freehold
- EPC Rating - C
- Merton Council Tax Band - E



For Free Mortgage Quote and Best Mortgage Rates, call an Ellisons Mortgage Advisor on 020 8944 9494



Although these particulars are believed to be correct, their accuracy is not guaranteed and they do not form part of any contract.

Celebrating 30 years of successful Sales and Lettings in Merton

